



BECOME AN
AVID SCHOOL

BECOME AN **AVID** SCHOOL

Students learn better when they know how to learn.

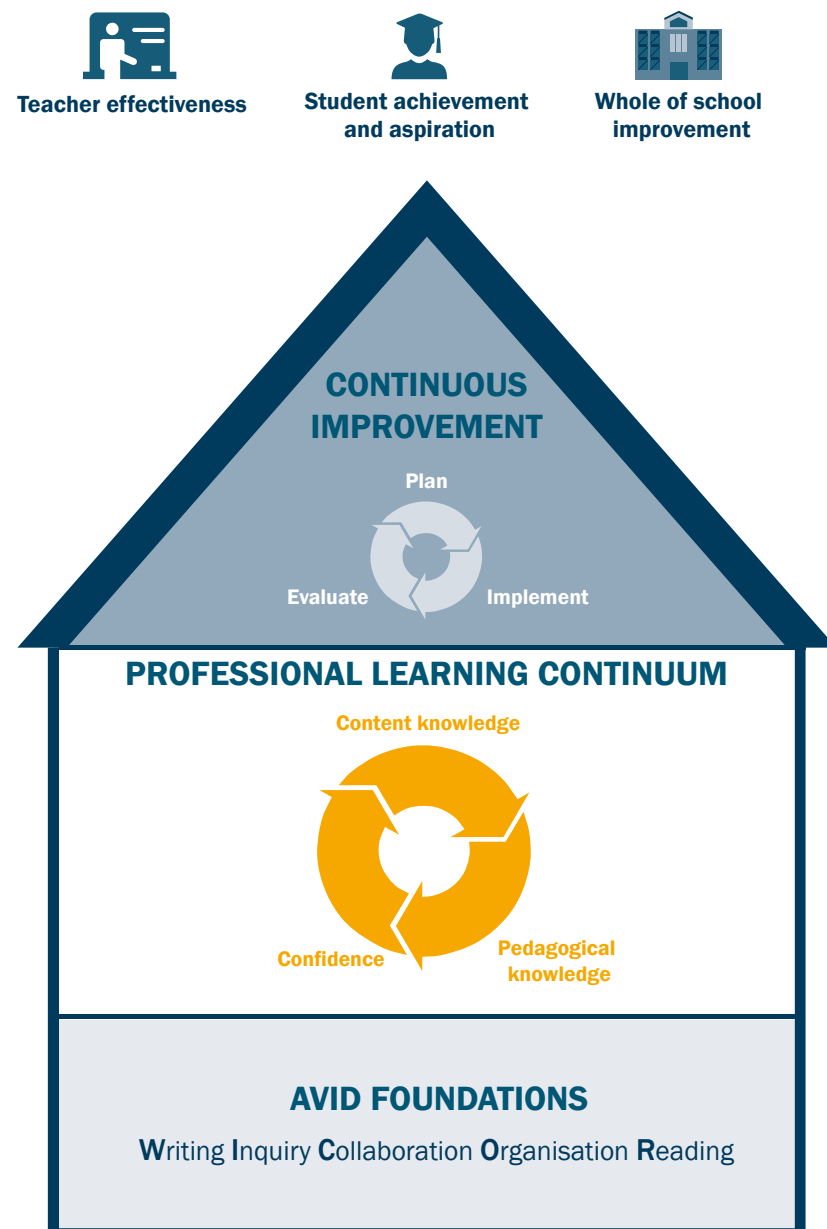
AVID (Advancement via Individual Determination) was created by an English teacher, Mary Catherine Swanson 37 years ago in the USA. She wanted to address the chronic academic underachievement she saw in her class amongst students from diverse and lower socio-economic status (SES) backgrounds. Her strategy was simple: enrol these students in the most rigorous classes and provide them with the support and strategies to learn – and it worked. Out of her first 32 students, all of them went to university (most to prestigious and Ivy League schools). Today, the AVID program has been successfully replicated in close to 6000 schools across the USA and Australia.



AVID in Australia

AVID supports a continuum of ongoing, whole-school improvement built around a teaching and learning framework — WICOR. WICOR incorporates explicit teaching strategies around: Critical Writing; Inquiry; Collaborative approaches; Organisational habits and skills; and Critical Reading to develop highly-engaged, self-directed learners. The AVID program provides extensive professional learning for teachers, leaders and schools to support students in developing the necessary academic, social and emotional skills, as well as the habits and behaviours needed to succeed in education and the work-place. When students are equipped with a reliable base of skills and effective learning strategies, they are able to navigate their ways to success.

A SYSTEM OF CHANGE



Continuous Improvement

AVID empowers students, teachers and schools to embrace the opportunity to reflect and revise their direction in order to achieve their goals. The AVID system fosters a culture of continuous improvement and provides the tools for schools to measure, evaluate and refine their strategies, over time.

Professional Learning Continuum

The AVID system has been designed to support teachers at every stage of their career development. Teachers are provided with high engagement strategies and the explicit tools for immediate implementation in the classroom.

Regular opportunities to practise, consolidate and refine their skills helps to build teacher capacity, confidence and effectiveness. Over time, schools develop their own internal expertise to sustain change and drive a culture of continuous improvement.

AVID Foundations

Students are equipped with the cognitive and organisational skills that teaches them lifelong learning skills, including effective study processes. With greater clarity of organisational thought, students have the necessary foundations for deeper critical thinking. AVID students are able to actively engage in analysis and discussion both independently and in groups, to further their understanding and ask critical questions. Utilising AVID's subject-based literacy strategies, students are able to meaningfully interact with ideas and demonstrate their knowledge with purpose and structure.

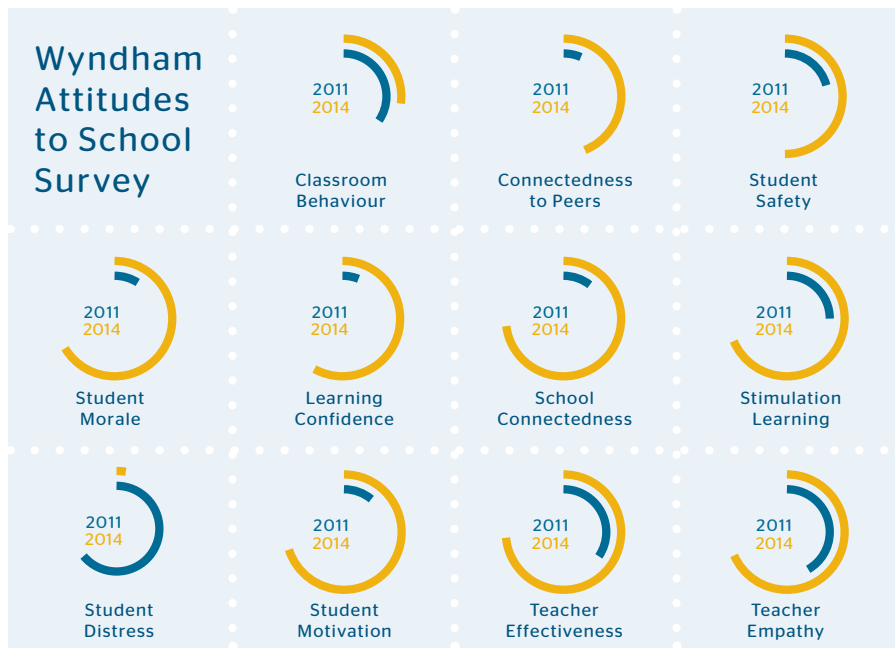
Teachers are supported with ongoing professional learning to effectively implement these strategies in their classrooms and skills to facilitate a learning culture that encourages engaged learners, critical thinking and positive social emotional behaviours.

WHAT AN AVID SCHOOL LOOKS LIKE

Whole-school improvement

For students to thrive, it takes a united and consistent approach across a school community. AVID's integrated approach helps schools to develop consistency and accountability across the school by simultaneously focusing on the needs of students, teachers and the school's leadership and administration. Whole-school improvement is a challenging and ongoing process of review, planning and refinement. AVID provides schools with extensive support to transform their academic and wellbeing outcomes, including analysis of data, consultation on effective AVID implementation, and customised solutions to guide improvement over time.

The Victorian Department for Education's Attitudes to School survey highlights the transformation of one AVID school in just three years. A more than 10-day drop in the average absence rate along with significant changes in students' attitudes to various aspects of schooling, show a significant improvement in the school's trajectory.



Wyndham Central College (2015). Victorian Department of Education Attitudes to School Survey

Supporting teachers

When teachers use high engagement strategies, classrooms cultivate active learners. At AVID, supporting teachers to be their best, no matter where they are in their career is one of our main priorities.

99 percent of participants at AVID Australia's premier professional learning event, Summer Institute, recommend the quality of professional learning and believe that the strategies they learned can be implemented in their classroom straight away. Summer Institute is an award-winning immersion model of professional learning, meaning teachers learn as students and are able to experience the learning journey their students have to follow. This deep learning experience makes them more confident and able teachers.

Join an international network of professionals

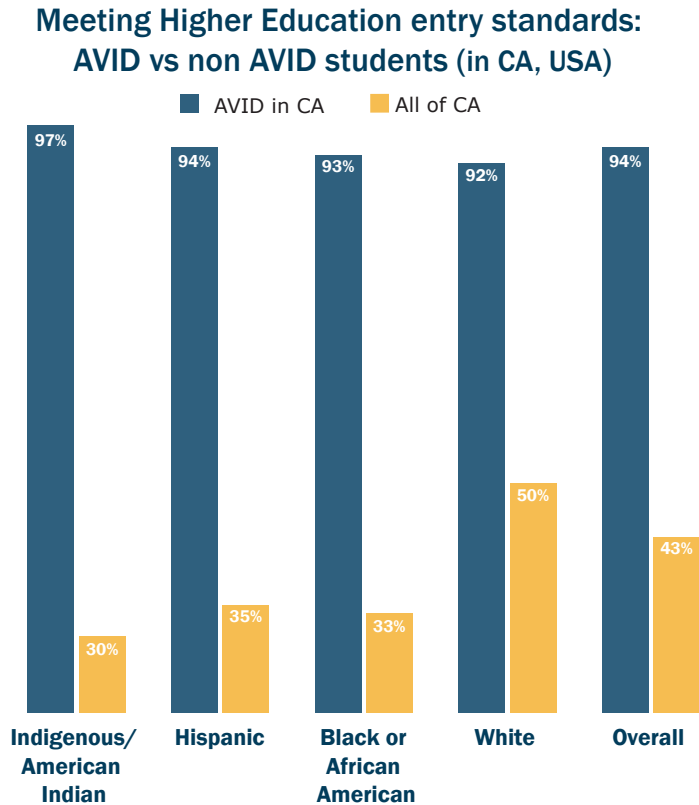
The AVID community is committed to ensuring all students can reach their potential, regardless of their postcode or circumstances. Teachers and schools are able to utilise the expertise of likeminded professionals to share strategies, build communities of practice and drive improvement, growth and improvement in their communities.



Student achievement

An AVID student learns how to take ownership of their academic abilities and develops the determination and motivation to pursue future opportunities.

In Australia, achievement and opportunity gaps remain significant for diverse and disadvantaged communities. Over 37 years of US data shows that AVID students achieve significantly higher academic results compared to national and state averages of non-AVID students in similar underachieving groups. Just over 30 percent of Hispanic and African American students meet the higher education entry standards in California. For Hispanic and African American students enrolled in AVID schools, well over 90 percent of students meet these standards.



AVID. (2015). AVID senior data collection.
California Department of Education Data Reporting Office. Retrieved from CA.gov.

AVID builds resilience, determination and practical learning skills that enable students to succeed in post-secondary education and beyond. While gaining admission to university, vocational pathways or the workforce is an important step, AVID students demonstrate the necessary persistence and resilience to negotiate transitions. The graph below shows that over 80 percent of AVID students (regardless of their background) will stay at university, after completing their first year.

Rates of persistence into the second year of college for AVID seniors who enrolled in the first year after high school graduation (USA)



AVID. (2014). AVID senior data collection.
National Student Clearinghouse Research Center. (2016, May 3).
Retrieved from National Student Clearinghouse Research Center.

A commitment to professional learning and growth

The professional learning component of AVID is central to its quality and sustainability. AVID's professional learning model consists of three parts and schools are able to access all three of them throughout the year.

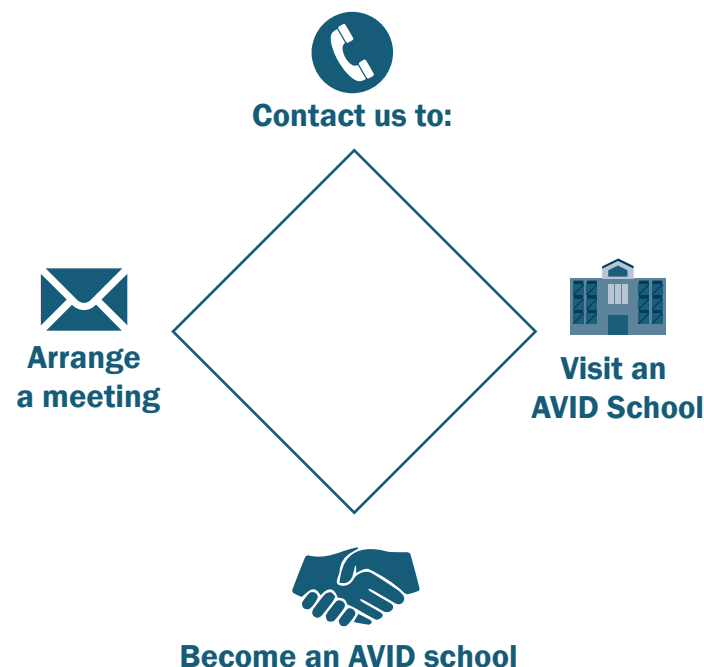
- ▶ Summer Institute is our national professional learning event that uses a full immersion model to allow teachers to become students in the class and experience and experiment with a number of explicit teaching strategies. Participants are assigned to a single strand over the course of three days with scheduled times to meet with members from their own school to plan their implementation. A wide range of strands are offered that draw from the latest national and international research.
- ▶ Tailored professional learning is delivered onsite by AVID Staff Developers to each school, for at least two days each year, customised to suit the school's specific training needs.
- ▶ Over time, AVID helps schools to develop their internal expertise so that schools can offer their own training to staff. This is a vital component to drive continuous improvement.

Resources

Schools are supported with a variety of resources filled with high engagement teaching strategies.

- ▶ **The AVID library** provide schools with access to host of curriculum texts to assist with implementation.
- ▶ Access to **MyAVID**, a rich online repository filled with AVID resources.
- ▶ **AVID Australia Monthly** is a resource that provides schools with nine AVID lesson plans and accompanying resources for nine months of the year. These lesson plans are a supplementary resource written by an experienced team to embed AVID strategies with differentiation and rigour.

NEXT STEPS



Contact details

P: +61 3 9919 7832
E: AVID.Australia@vu.edu.au
W: AVIDAustralia.edu.au

Address:
Level 3, 300 Queen Street
Melbourne, VIC, 3000

CONTACT US

AVID Australia

P: +61 3 9919 7832

E: AVID.Australia@vu.edu.au

Level 3 | 300 Queen Street
Melbourne | VIC | 3000



AVIDAustralia.edu.au

